



Glitter Water Fountain

User Manual



118Oz
3.5L

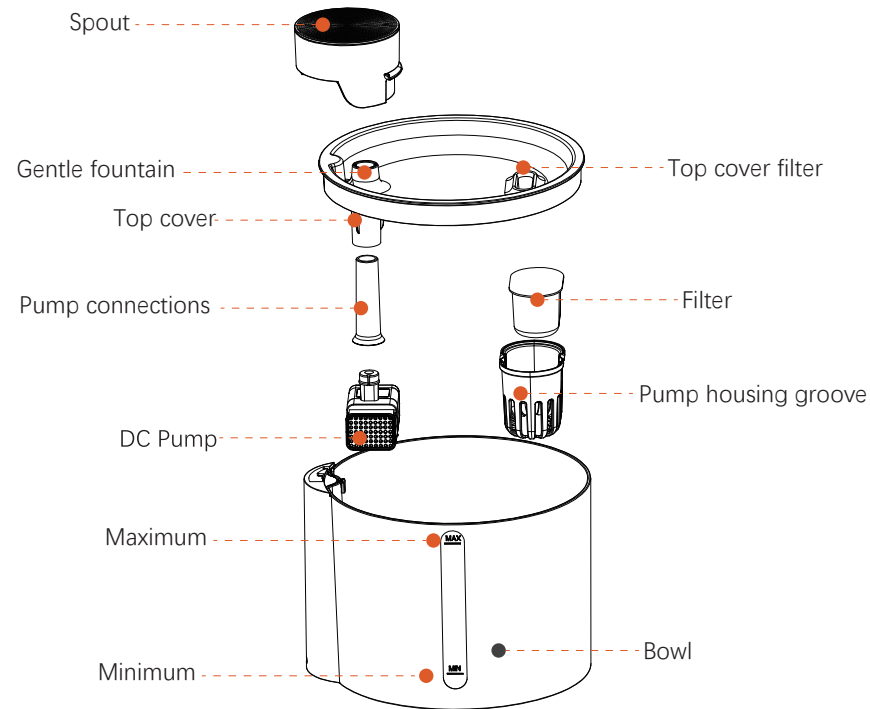
Made in China

IMPORTANT REMINDERS

- Product is for indoor use only.
- For the plug or outlet, avoid contact with water.
- Keep power adapter above the pet fountain unit.
- Runs on DC 5V power adapter, Or USB interface of socket board, Non-USB power adapters are not compatible.
- Ensure water is in the fountain when the machine is running to avoid damaging the pump.
- Make sure the cord does not have any frayed or exposed wires in case your pet chews on the cord.
- If the fountain suddenly becomes noisy, it may be because the water level is too low. Add water to the fountain to resolve this problem.
- Please clean the pump every 2 weeks to extend the life of the pump. (The pump can be used for 2-3 years, and we've found that 99% of the pumps can be reused after cleaning through analysis of returned products.) We advocate for environmental protection, and thus discourage our buyers from purchasing new pumps before attempting cleaning. The cleaning process video is accessible via the product page.

①

COMPONENTS



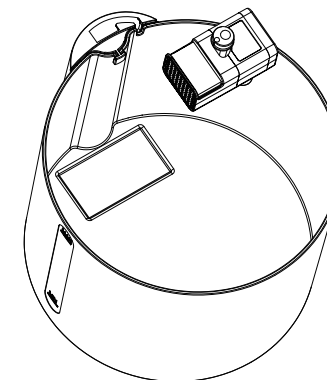
WHAT YOU WILL GET

- Instruction Manual
- Pet Water Fountain
- Filter
- Pre-filter Sponge (Installed in pump)
- DC Pump (With a 6ft power cord)

②

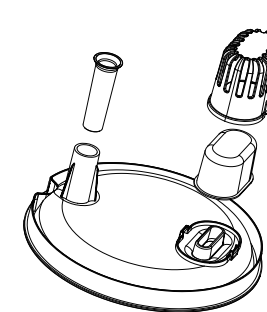
SETUP INSTRUCTIONS

- First install the pump, and then put the pump into the slot. Press down on the pump to make the suction cup on the underside stick tightly.



- **Note:** Make sure the pump is fixed in place in the tank.

- Place activated carbon filter in the pump housing groove and close.



- Soak the enclosed filter in a clean bowl for 5 minutes.

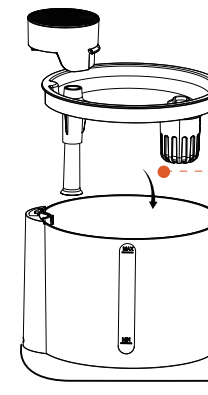
Notes:

1. The filter must be fully soaked before the fountain is turned on; otherwise, water may not disperse smoothly through the filter, causing spillage.
2. Do not soak filter in the water tank of the fountain, as surface dust may be present.

③

SPECIFICATION

- Open the cover and put back the cover.



- Put back the cover to form a seal.

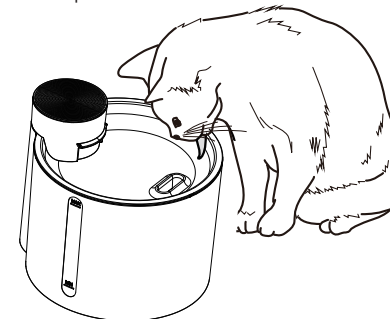
- Connect the USB interface of socket board directly or DC 5V power adapter (not supplied)

INSTRUCTIONS FOR USE

- Place the water dispenser at a location where the pet often moves. When filling the water bowl with water, be careful not to exceed the maximum level.
- Keep the USB port dry. Connect the USB port to the socket or use a DC 5V power adapter (not provided).

Note:

Blue light always on, Red light displayed upon shortage of water to remind you to replenish.

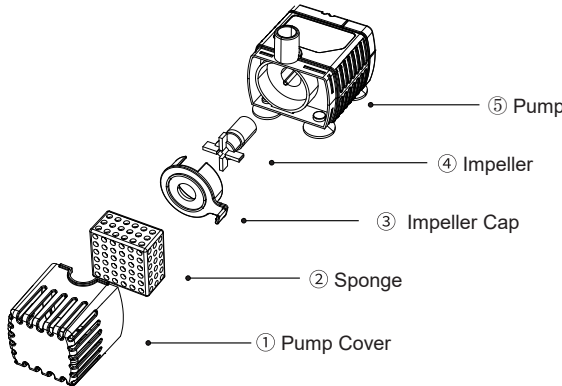


④

PUMP MAINTENANCE

Cleaning the pump is essential for the longevity of the fountain.
It is recommended to clean the pump once every 2 weeks.

- Remove the pump cover.
- Remove the impeller and clean the parts with soap and warm water.



CAUTION:

1. Turn off and then disconnect the power supply to ensure safety when the device is not in use
2. This product is only for indoor use.
3. The power adapter and wire plug should not be flooded during cleaning.
4. Glitter Water Fountain cannot run without water and will automatically stop without water.
5. For safety, disconnect the power supply before repairing and cleaning the machine.

⑤

SPECIFICATION

Product Name	Wopet Glitter Water Fountain
Model	W500
Power Input	DV 5V 1A
Pump	Ultra Quiet Water Pump
Power Consumption	1.5W
Cord Length	1.5m
Materials	Environmentally friendly plastic
Filter System	Activated Carbon, ion exchange resin Silver ion
Capacity	3.5L



Scan the QR code to set up the fountain

⑥

Q&A TROUBLESHOOTING

• How often do I need to change the filter?

The filter should be changed every 2-3 weeks. This will depend on the number of pets using the fountain. Multiple pets using the fountain can increase saliva levels and debris in the water, and so filters need to be changed more frequently.

• Why do I find small black particles in my pet's fountain?

It is common for some residual charcoal dust to leak from the filter. This is completely normal and will not harm your pet in any way. To prevent carbon chips from falling off, rinse the filter thoroughly before running.

• How often should I clean the fountain?

The fountain should be cleaned at least once every two weeks.

• How long will the fountain pump last?

For fountains with long life DC pumps, the pumps typically last 2 to 3 years (more than 17,520 hours). If the pump has been in regular use during this time, it may need to be replaced.

• How much power does the fountain use?

The fountain operates with an ultra-low power DC pump and a power adapter. The total power consumption of the unit is about 1.5 watts, which means the total power consumption is about 1.08 kWh per month or 12.96 kWh per year.

⑦

WARRANTY INFORMATION

TWO YEAR NON-TRANSFERRABLE LIMITED WARRANTY

- To provide customers with a quality user experience, we guarantee we will replace or issue a refund for any defective product (whichever the customer prefers) for up to two (2) years from the date of purchase.

- Proof of purchase must be provided (Amazon order number or receipt) when submitting a claim to our customer support center.

Warranty registration may be requested within a month from the date of purchase by sending your Amazon order number to the mailbox: support@wopet.com

- Price matching policy is not applicable. No price difference refunds.

- Sellers are the responsible party. Amazon allows different sellers to sell the same product, so please confirm the seller by checking the order details before contacting us.

WHAT IS COVERED

- Product that Manufacturer finds defective;
- Products with missing or damaged parts; Manufacturer may replace missing or damaged parts.

WHAT IS NOT COVERED

- Purchased from non-Amazon channel or other physical stores;
- Gift without proof of purchase;
- Tampering/abnormal use/ accidental damage or commercial use;
- Replacements and parts;
- Installation fee/ labor fee.

⑧

MAKING A CLAIM

- If you have any problems while using our products, you can choose any previously mentioned method to reach out to us.

- Email: support@wopet.com

30 days free Return & Replacement

2-Year Product Warranty



- Our standard warranty time is 12 months, but you can get 24-month warranty if you register in our website within 30 days when you received the items, please scan the below QR code to finish the registration

■ HAVE A QUESTION FOR THE SELLER?

1. Find your order

Home

Your Order

Buy Again
Your Wish List
Your Account
Shop by Department

2. Click “View order details”

Your Orders

Product link

Buy it again
Write a product review

View order details

3. Click the “Seller name”

View order details
Order #
Order Total
Shipped

Product link
Qty:1
Sold By: Seller

4. Click “Ask a question”

BRAND

Have a question for the seller?

Ask a question

- Gifted parts, replacements, and consumable products are not covered by the 2-year warranty.

- Manufacturers' warranties may not apply in all cases; this depends on various factors such as: use of the product, where the product was purchased, or who you purchased the product from.

- Please review the warranty carefully, contact the manufacturer if you have any questions.

⑨